



Is a Conservation Easement Right For You?

Jesse Wimberley

Outreach Coordinator, Sandhills Area Land
Trust

August 10, 2015

What is a Conservation Easement?

- Lasting, legal agreement
- Landowner and *Qualified* Conservation Organization (Land Trust)
- May restrict certain land uses
- Landowner receives tax benefits
- Direct compensation for purchase of development rights

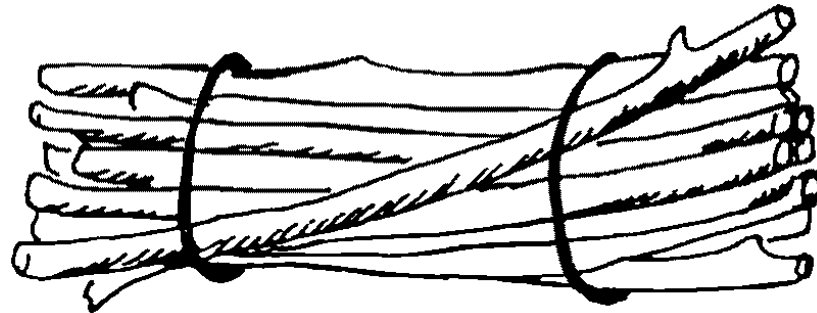
What is a Conservation Easement?

- Easement can be written for continuation of farming, timber operations
- Leaving a legacy



Why consider an Easement?

- A tool to help protect land
- Utilize equity in land while retaining ownership
- Ensures productive use for future generations

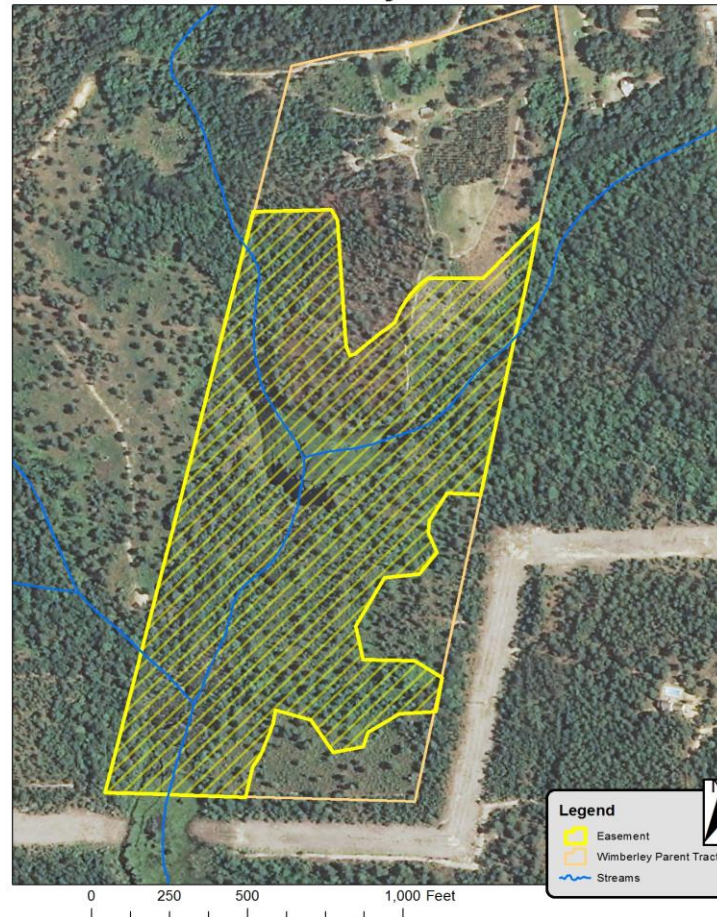


Pine straw production vs preserving important ecosystems



Example: Lighterwood Farm

Wimberley Tract



Sandhills Area Land Trust

- Jesse Wimberley
Outreach Coordinator
910-603-1052
Jessewimberley@earthlink.net

